

Standalone Digital Keypads



ACT 10 Digital Keypad

Features

- pin only digital keypad
- 10 user codes
- 2 user groups
- push to exit input
- incorrect code lockout
- door monitoring / contact input
- tamper output
- fire alarm override
- interlock
- toggle mode
- 12 - 24 Volt AC / DC supply
- 2 x 5 amp, 30 Volt DC relays
- 2 x 100 mA Darlington Driver outputs
- zinc diecast housing, stainless steel keys
- keypad backlighting
- indoor / outdoor (IP54)

Product Code ACT 10
(includes digital keypad, 2 varistors & manual)



ACT Standalone

Related Products

ACT 10 Flush Kit	p 3
ACT 10 Weather Shield	p 3

ACT 5 Digital Keypad

Features

- pin only digital keypad
- 10 user codes
- push to exit input
- incorrect code lockout
- toggle mode
- 5 amp, 30 Volt DC relay
- polycarbonate housing, stainless steel keys
- keypad backlighting
- potted electronics
- indoor / outdoor (IP67)
- surface / flush mount options
- mounts on to standard single gang electrical back box

Product Code ACT 5
(includes digital keypad, flush mount plate, surface mount collar, 1 varistor & manual)



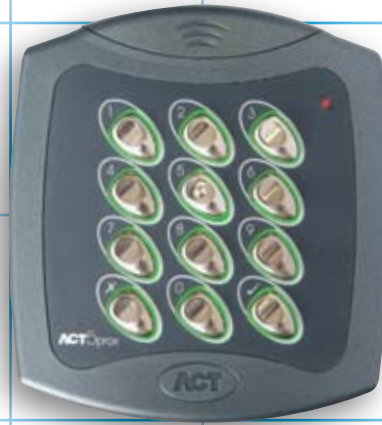
Digital Keypad + Proximity (125 kHz)

ACT 5prox Pin & Proximity

Features

- pin & proximity digital keypad
- 50 user codes & 50 cards / fobs
- push to exit input
- incorrect code lockout
- toggle mode
- 5 amp, 30 Volt DC relay
- polycarbonate housing with stainless steel keys
- keypad backlighting
- potted electronics
- indoor / outdoor (IP67)
- surface / flush mount options
- mounts on to standard single gang electrical back box

Product Code ACT 5prox
(includes digital keypad, flush mount plate, surface mount collar, 1 varistor & manual)



For use with ACT 5prox

for a full list of ACT cards & fobs see page 4





Keypad Accessories

ACT 10 Flush Kit

Features

- Stainless steel flush mount kit for the ACT 10 digital keypad

Product Code ACT 10FK



ACT 10 Weather Shield

Features

- Stainless steel weather shield cover plate for the ACT 10 digital keypad

Product Code ACT 10WS



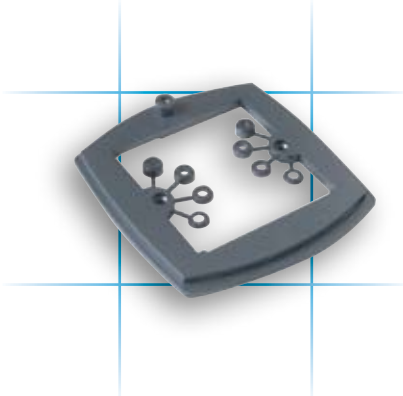
ACT stand
alone

Flush Mount Plate

Features

- flush mount plate for the ACT 5 / 5prox
- fits standard single gang electrical back box

Product Code included with device

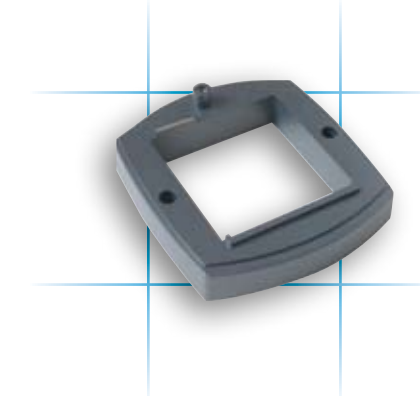


Surface Mount Collar

Features

- surface mount collar for the ACT 5 / 5prox
- fits standard single gang electrical back box

Product Code included with device



Proximity Cards & Fobs (125 kHz)

ACTProx Fob

Features

ACT proximity key fob
max range of up to 8cm
extremely robust
supplied in pack of 10

Product Code ACTProx Fob-B



ACTProx ISO Card

Features

ACT ISO proximity card
suitable for printing
max range of up to 8cm
supplied in pack of 10

Product Code ACTProx ISO-B



ACTProx HS Card

Features

ACT half shell proximity card
not suitable for printing
max range of up to 8cm
extremely durable
supplied in pack of 10

Product Code ACTProx HS-B



ACTProx Duo

Features

ACT Duo proximity card (prox & mag stripe)
suitable for printing
max range of up to 8cm
supplied in pack of 10

Product Code ACTProx Duo-B





Cards & Fobs Accessories

Lanyard

use with ACT cardholder to secure card around the neck
quick safety release clip

Product Code ACT Lanyard

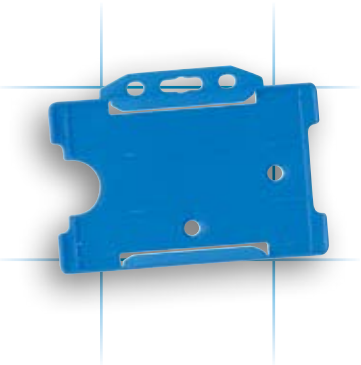


Cardholder

Features

plastic holder for cards
attach to lanyard or clip

Product Code ACT Cardholder



Clips

Features

use with the ACT cardholder to secure card to clothing

Product Code ACT Clip



Yo Yo

Features

Elasticated holder for cards and fobs

Product Code ACT YO-YO



ACT stand alone

Card Printing Bureau Services

Card ID

Features

personalised printing
e.g. employee name,
photo, department, etc

Product Code ACT ID

Card Logo

Features

non-personalised printing
e.g. company logo,
address, phone, etc.

Product Code ACT Logo

Encoding

Features

to add non standard
encoding to a card

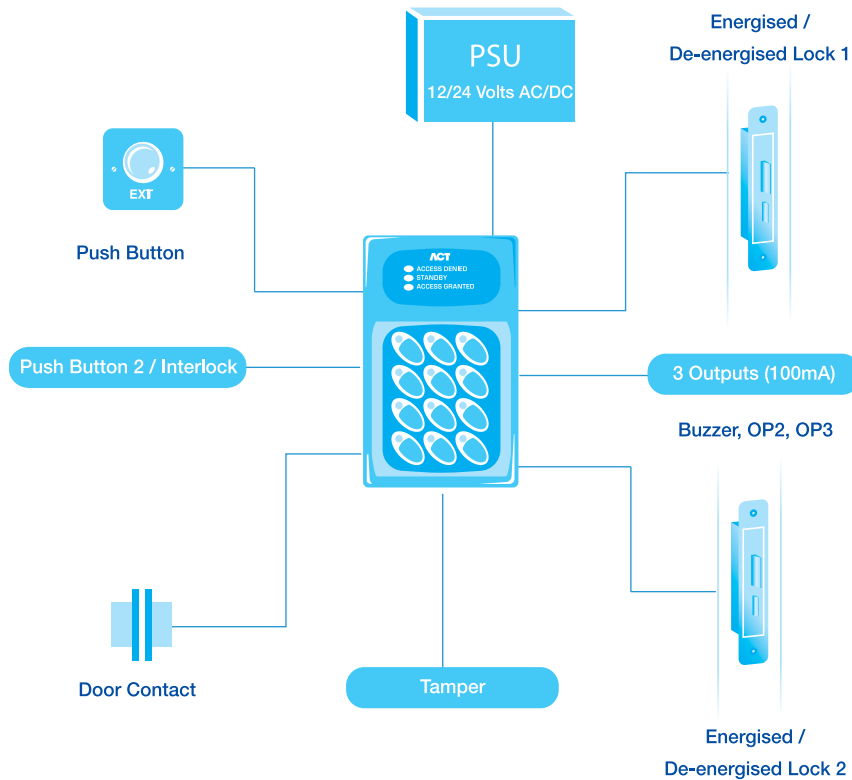
Product Code Encoding

Product Specification

	ACT 10 (Pln only)	ACT 5 (Pln only)	ACT 5prox (Pln & Prox)
Operating Voltage	12 - 24 Volts AC / DC	12 - 24 Volts AC / DC	12 - 24 Volts AC / DC
Current Consumption	40 / 120 mA	30 / 120 mA	60 / 100 mA
Output Current Sink	100 mA	n/a	n/a
Operating Temperature	- 10 to + 50 ° C	- 10 to + 50 ° C	- 10 to + 50 ° C
Door Open Time	0 - 255 seconds	0 - 255 seconds	0 - 255 seconds
Relay Contact Rating	2 x 5A / 30 Volt	5A / 30 Volt	5A / 30 Volt
Weight	633 gms	150 gms	166 gms
Dimensions (H x W x D, mm)	138 x 87 x 37	100 x 110 x 35	100 x 110 x 35
Mounting	surface / flush	surface / flush	surface / flush
Installation	indoor / outdoor (IP54)	indoor / outdoor (IP67)	indoor / outdoor (IP67)
Construction	zinc diecast housing, stainless steel keys	rugged polycarbonate housing, stainless steel keys, potted electronics	

Product Schematics

ACT 10 Digital Keypad

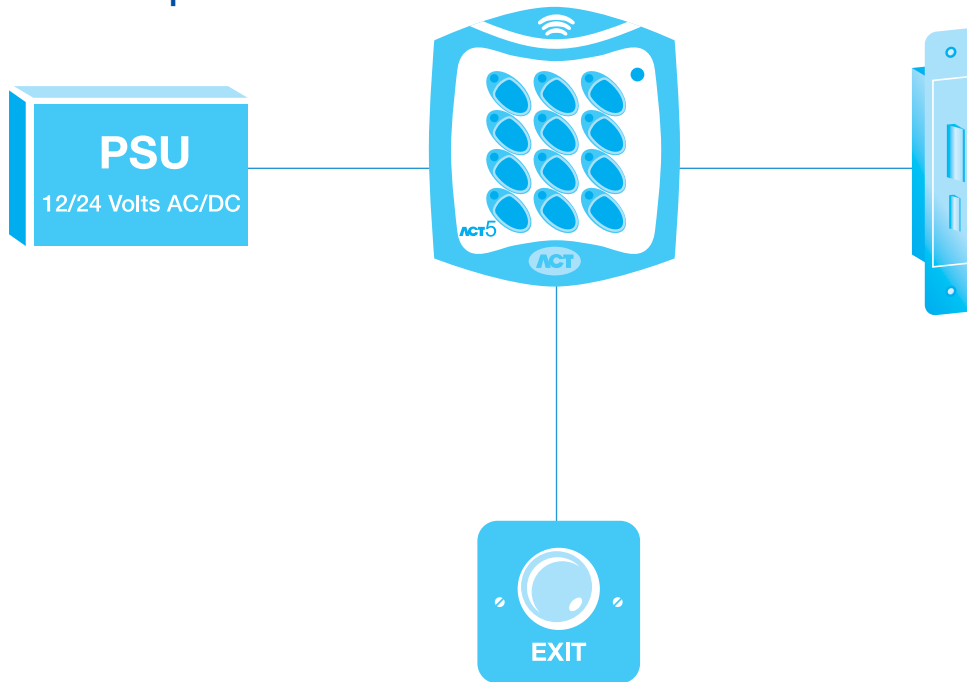


For built in electronic inputs / outputs use a DC supply for full functionality



Product Schematics cont'd

ACT 5 / 5prox



ACT stand
alone

Installation Notes

ACT 5 / ACT 5prox

The ACT 5 / 5prox require operating voltage of 12 - 24 volts AC or DC
5 amp lock output
Indoor / outdoor installation (IP67)
Operating Temperature: -10 to +50 C
The ACT 5 / 5prox can be surface or flush mounted

ACT 10

The ACT10 requires an operating voltage of 12 - 24 volts AC or DC
2 x 5amp relay outputs
Indoor / outdoor installation (IP54)
Operating Temperature: -10 to +50 C
For full functionality use a 12 Volt DC power source

Product Comparisons

Please use these cross reference charts to help you choose the device which most suits your needs.

	ACT 10 (Pin only)	ACT 5 (Pin only)	ACT 5prox (Pin & Prox)
Doors	2	1	1
Users	10	10	50
User Groups	1		
Pin Only	✓	✓	✓
Pin & Card			✓
Pin or Card			✓
Card Only			✓
Keypad Backlighting	✓	✓	✓
Push to exit	✓	✓	✓
Door Monitoring	✓		
Fire Alarm Override	✓		
Interlock	✓		
Toggle Mode	✓	✓	✓
Door Relay Output	5 amp	5 amp	5 amp
Programmable Inputs	2		
Programmable Outputs	2		
Push to release button input	✓	✓	✓
Tamper Output	✓		
12 - 24 Volt DC or AC input	✓	✓	✓
IP Rating	IP54	IP67	IP67
Door Forced / Door Ajar	✓		
Change Relay Timer	✓	✓	✓
Duress Code	✓		